

Hufflepuff Knit Hat Pattern

hollyghats.com

Gauge

- 16 stitches and 24 rows = 4 inches
in stockinette stitch

Brim

- Cast 84 stitches of black yarn onto needle
- k1p1 until brim reaches preferred length
(or 8 rows)

Body (Chart)

- Row 1: work chart, m1 every 12 stitches to hit 90
stitches total
- Rows 2-27: work chart

Crown

- Rows 28-43: **black yarn**
- Row 28: k8, SSK *repeat until end of round*
- Row 29: knit across
- Row 30: k7, SSK *repeat until end of round*
- Row 31: knit across
- Row 32: k6, SSK *repeat until end of round*
- Row 33: knit across
- Row 34: k5, SSK *repeat until end of round*
- Row 35: knit across
- Row 36: k4, SSK *repeat until end of round*
- Row 37: knit across
- Row 38: k3, SSK *repeat until end of round*
- Row 39: knit across
- Row 40: k2, SSK *repeat until end of round*
- Row 41: knit across
- Row 42: k1, SSK *repeat until end of round*
- Cut yarn, pull through the remaining loops, and tie
in all your loose ends!

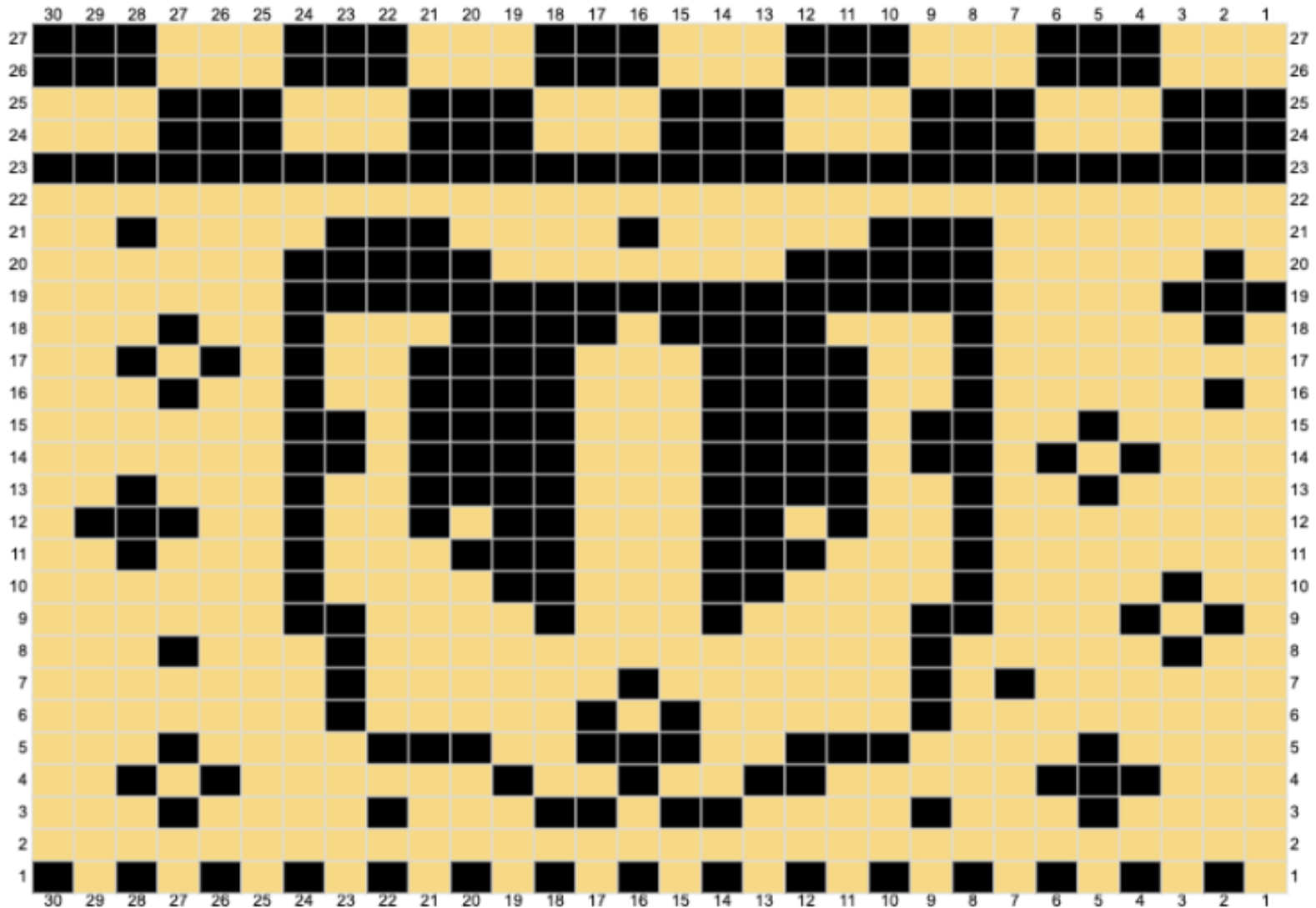
Materials:

- 1 skein worsted weight yarn, black
- 1 skein worsted weight yarn, yellow
- size 7 DPNs or 9" round needles
- Yarn needle



Hufflepuff Knit Hat Pattern

hollyghats.com



- Questions? Email me at hollyghats@gmail.com or contact me through hollyghats.com
- Please share with friends, family, and all lovely Hufflepuffs! But please do not resell or use this pattern to sell hats online.