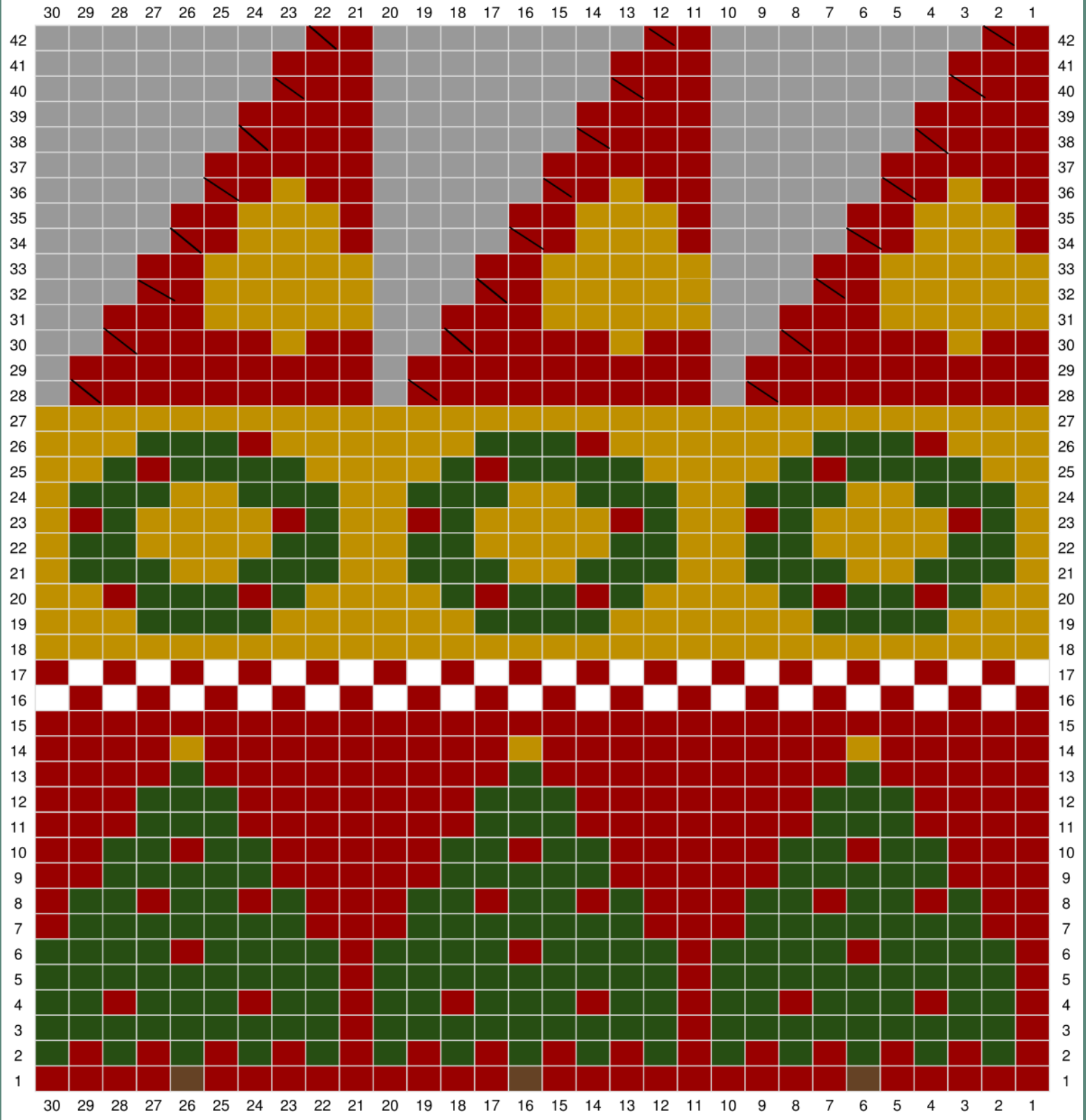




HOLLY G HATS

for knitters, crafters & etsy sellers

Ugly Christmas Knit Hat





INSTRUCTIONS

concerns? questions?
hollyghats.com

materials

- 5 skeins soft worsted weight yarn in maroon, evergreen, gold, white, brown
- DPN or 9-in round needles, size 5-8 (knit swatch to determine size)
- For lighter yarn / smaller needle size, can increase stitches to 120 and repeat chart 4 times

brim

- cast on 90 stitches with green yarn
- k1p1 until brim reaches at least 2 inches in length
- For a longer, foldable brim, k1p1 until brim reaches preferred length

body

- begin knitting chart, repeating 3 times around
- be sure to float stitches in rows requiring more than 4 stitches of any one color at a time
- For the wreath, I recommend knitting the green and embroidering red berries after the hat is complete. Knitting with 3 colors is a hassle!

crown

- Decreases begin on row 28. Divide row into sections of 10 stitches. Here, knit 8 stitches and skp1 to reduce each section by 1.
- Alternate knit rows and decreases, following chart.
- After decreasing the last row, close and finish the hat. Weave in loose ends.